

NTC Financial Literacy
K-12 Curriculum



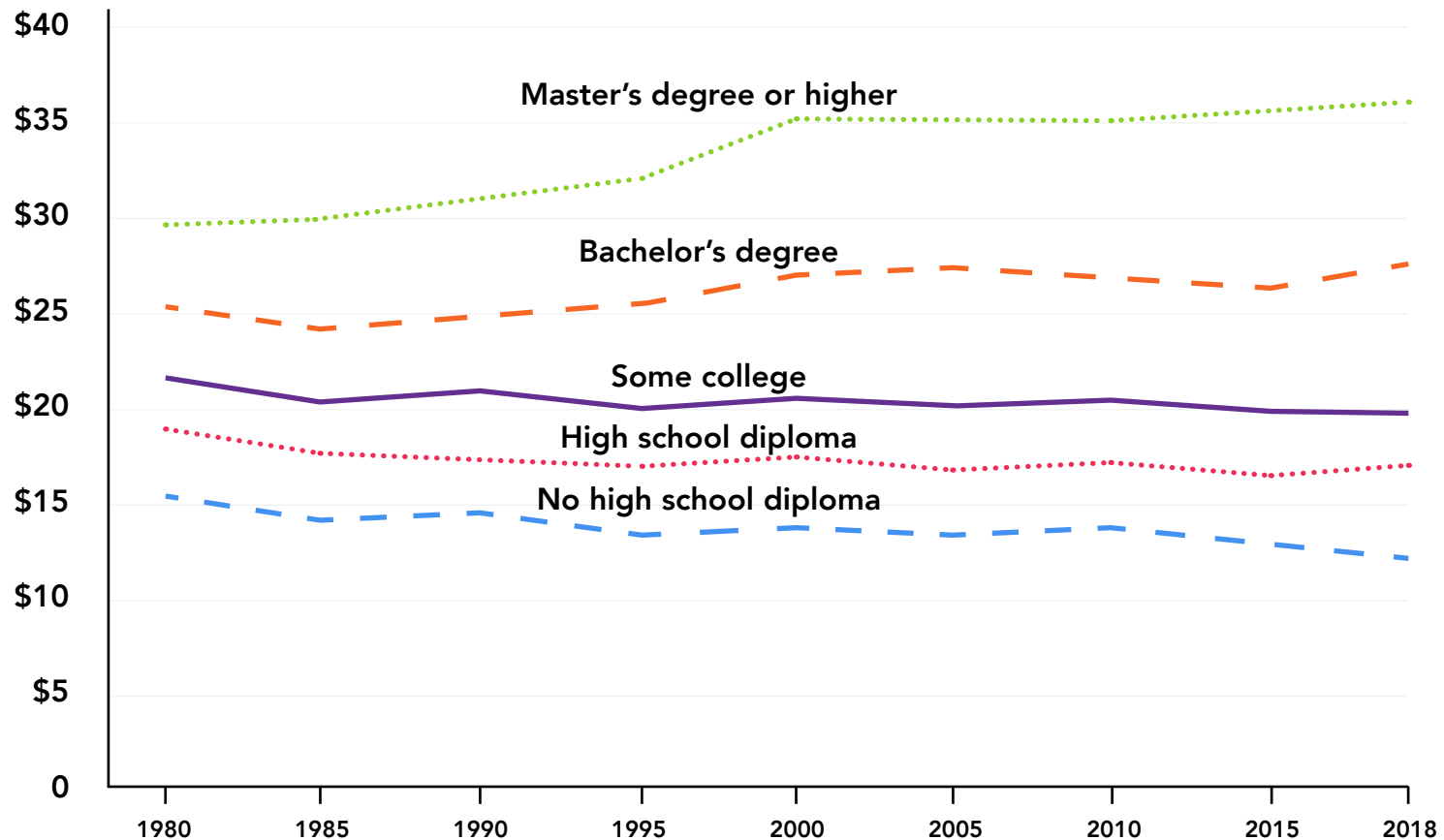
MONEY SMART 2.0
TEACHER
Presentation
Slides
for Grades 6-8



The National Theatre for Children

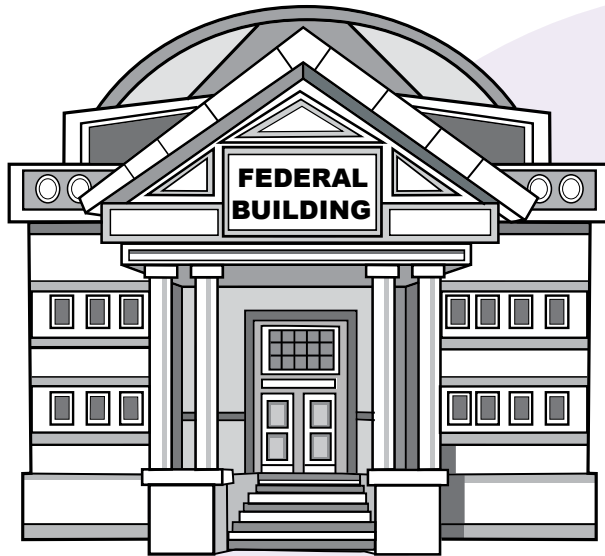
DEGREES MATTER

Median Real Hourly Wages by Educational Attainment



Source: fas.org/sgp/crs/misc/R45090.pdf

EXPLAINING TAXES



Current Amount	Withholdings/Deduction		Current Amount	Year to Date
600.00	FICA Med Tax		8.70	191.40
	FICA SS Tax		37.20	818.40
	FICA Tax		59.57	
	MA St Tax		28.19	820.15
Net Pay 466.34	YTD Earnings 13,200.00	YTD Deductions 2,790.50	YTD Net Pay 10,259.97	Check No. 2715

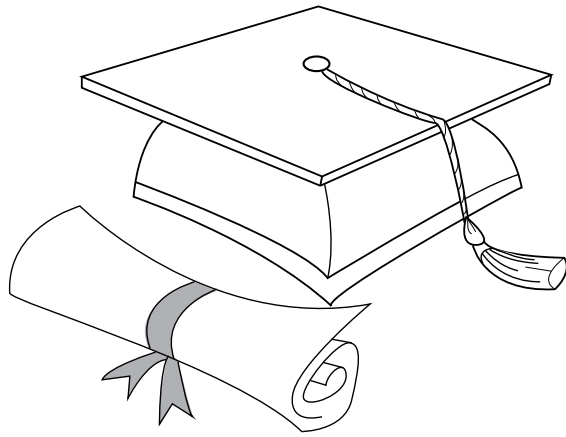
INCOME AND TAXES

MY FIRST JOB	MY SECOND JOB	MY THIRD JOB
Level of Education: <i>Bachelor's degree</i>	Level of Education: <i>Master's degree</i>	Level of Education: <i>Master's degree plus an Advanced Certificate</i>
Job Experience: <i>First month on the job</i>	Job Experience: <i>Five years on the job</i>	Job Experience: <i>20 years on the job</i>
Salary: <i>\$40,000 annually</i>	Salary: <i>\$76,000 annually</i>	Salary: <i>\$122,000 annually</i>

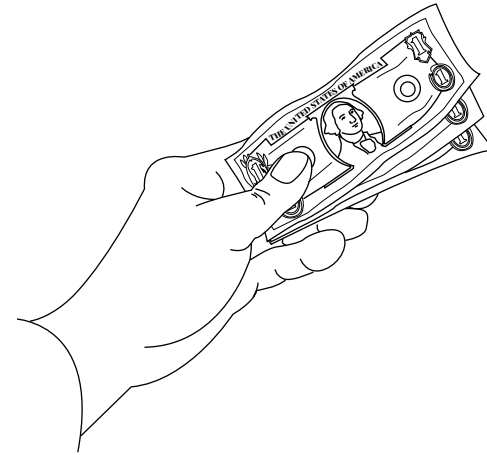
TAX BRACKET FOR 2021

IF TAXABLE INCOME IS:	THE TAX IS:
Not over \$9,950	10% of the taxable income
Over \$9,950 but not over \$40,525	\$995.00 plus 12% of the excess over \$9,950
Over \$40,525 but not over \$86,375	\$4,664 plus 22% of the excess over \$40,525
Over \$86,375 but not over \$164,925	\$14,751 plus 24% of the excess over \$86,375
Over \$164,925 but not over \$209,425	\$33,603 plus 32% of the excess over \$164,925
Over \$209,425 but not over \$523,600	\$47,843 plus 35% of the excess over \$209,425
Over \$523,600	\$157,804.25 plus 37% of the excess over \$523,600

FINANCIAL VALUES SAMPLE



Education



Charitable Giving



Retirement



Family

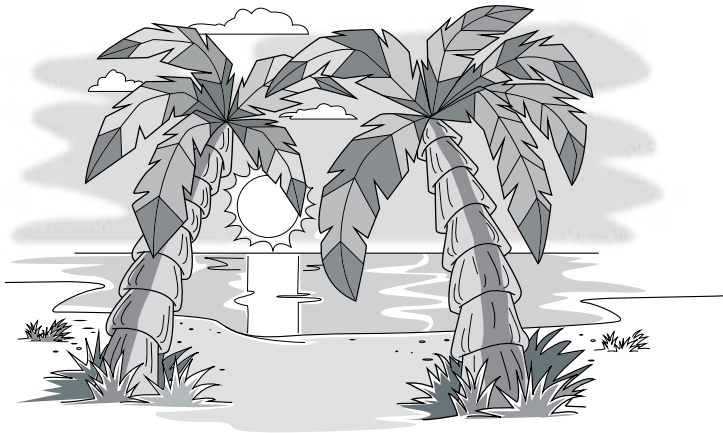
FINANCIAL VALUES SAMPLE

LAST	CHG	%	LAST	CHG	%	LAST	CHG	%
19.01	1.2	4.4	14.01	1.2	4.4	20.01	1.2	4.4
14.67	7.2	3.7	24.67	7.2	3.7	11.27	7.2	3.7
12.01	1.3	2.4	8.01	1.3	2.4	24.01	1.3	6.4
11.04	1.6	5.2	14.04	2.7	5.2	34.04	1.6	5.2
19.01	1.2	4.4	16.01	4.5	4.4	1.12	1.2	1.1
22.65	1.2	4.4	24.65	1.2	4.4	22.65	7.6	6.2
17.07	0.6	4.4	11.07	1.6	7.4	11.07	0.8	5.1
19.01	1.2	4.4	15.01	1.2	7.4	13.01	4.2	4.4
15.01	1.2	6.4	5.01	1.2	3.4	15.01	1.2	6.4
2.05	1.2	3.7	4.05	1.2	2.7	6.05	5.2	3.7
18.37	3.2	7.4	29.37	3.2	7.4	12.57	3.1	7.5
8.01	2.7	4.4	6.07	2.7	5.4	3.01	2.7	3.4
24.01	1.2	2.4	24.01	4.1	1.9	10.01	1.2	6.1
34.01	1.2	6.4	18.01	7.6	5.2	28.01	5.2	2.4

Investment



Entertainment



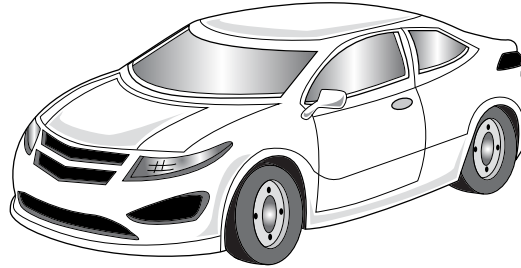
Travel



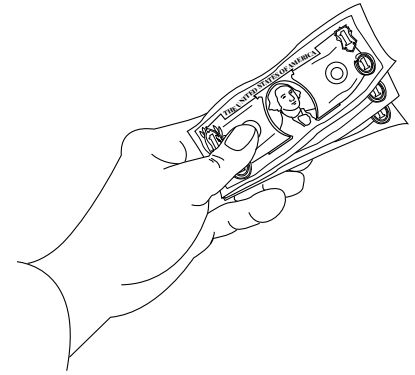
Lifestyle

FINANCIAL GOALS SAMPLE

Buying my mom a car



Donating money and volunteering time every holiday season



Buying a home



Saving enough money to live a comfortable life



FINANCIAL GOALS SAMPLE

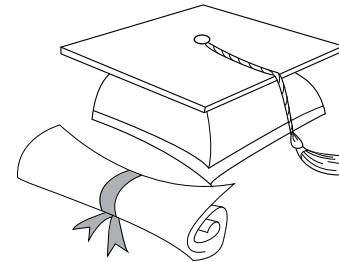
Buying a gaming system



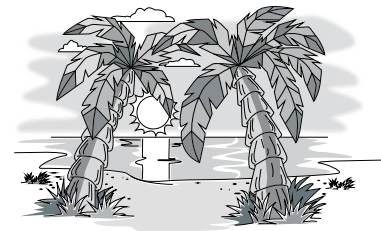
Making money by investing in a company's stock



Paying for part of my college tuition



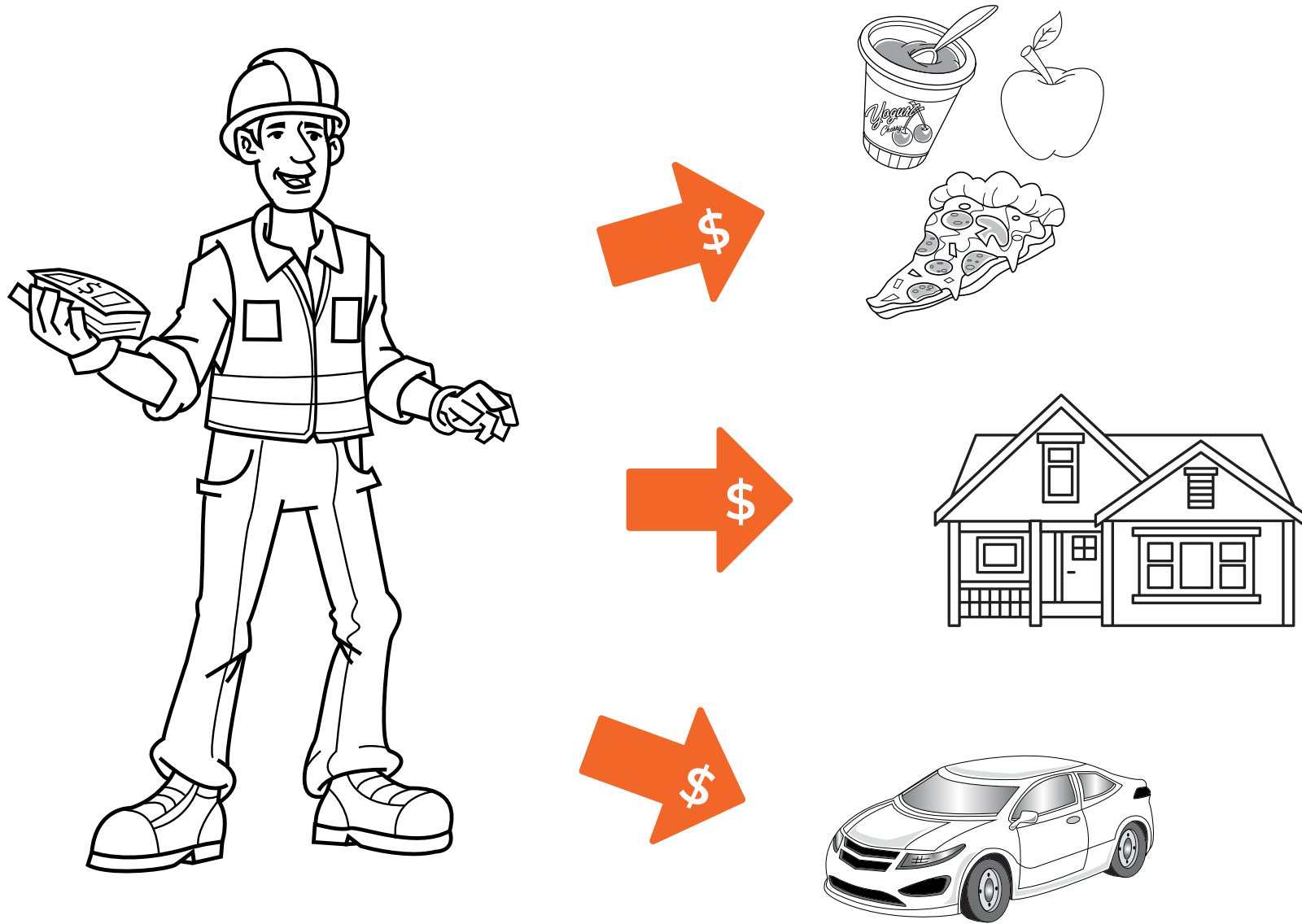
Visiting my relatives in California



CEREAL ADVERTISEMENT



WHAT IS CASH FLOW?



SCENARIOS

GROUP 1:

Your parents have just informed you that, if you want a car, you'll have to pay for it yourself. You're 14, and right now you get a small allowance, but you plan to get a job as soon as you can. In the meantime, you want to make sure that you save money so that you'll be able to buy your car.

GROUP 2:

The school dance is just two weeks away. The cost of a ticket is \$20. All of your friends are going, but you're not sure you'll have enough extra money for a ticket. You have two babysitting jobs lined up for the next two weeks, but that leaves you a few dollars short of purchasing a \$20 ticket.

GROUP 3:

You've achieved your goal of getting a full scholarship to the college of your dreams. The only problem is that the scholarship will not cover the cost of textbooks, which you estimate will run you about \$500 for the first semester. You have the summer to save money, and you have a summer job.

GROUP 4:

You like to look very put-together for the start of the new school year. This year, you're on your own. No one is paying for any of your back-to-school clothes. It's the summer, and you have a few bucks stashed away in your room, plus a couple of jobs lined up mowing neighbors' lawns for money.

SAVINGS OPTIONS

OPEN A SAVINGS ACCOUNT

Opening a savings account helps you save money. Putting money into a savings account not only sets money aside so that you won't spend it, but it also gains interest slowly but surely.



CUT BACK

Cut back on your spending. Think about the things you need versus the things you want. What can you afford to cut back on and still live a comfortable lifestyle?

OPTION 1

GO CHEAPER

Of the things that you purchase, are they the least expensive brands? Are you willing to swap brand names with generic brands?

OPTION 2

CREATE NEW HABITS

Sometimes, developing new habits can help you save money. Are you willing to change some of your habits in order to save money?

OPTION 3

UNDERSTANDING COMPOUND INTEREST WARM UP

PRINCIPAL: An amount of money originally invested, excluding any interest or dividends

INTEREST: Earnings from lending money

COMPOUNDING: Calculating interest on both principal and previously earned interest

You have placed \$2,000 (called the principal) into a savings account. Your bank offers a generous interest rate of 5%, compounded annually. Using the table below, determine how much money your \$2,000 would increase to in five years.

YEAR	BALANCE	INTEREST	TOTAL
1	\$2,000.00	\$100.00	\$2,100.00
2	\$2,100.00		
3			
4			
5			

COMPOUND INTEREST FORMULA

$$A = P\left(1 + \frac{r}{n}\right)^{nt}$$

P = principal amount
(the initial amount you owe or borrow)

r = annual rate or interest (as a decimal)


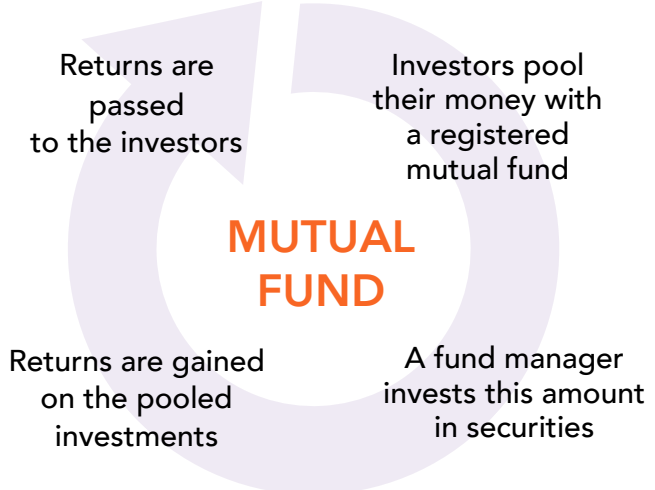
t = number of years the amount is
deposited or borrowed for

A = amount of money accumulated
after n years, including interest

n = number of times the interest
is compounded per year

INVESTMENT VEHICLES

What are examples of how I can invest money?

STOCK	MUTUAL FUNDS
<ul style="list-style-type: none"> Investment in a company Shares of ownership in a company Value of investment based on company performance 	<ul style="list-style-type: none"> Investments in several areas (companies, bonds, etc.) Diversified 

Note: These are two types of investments that are not federally insured.

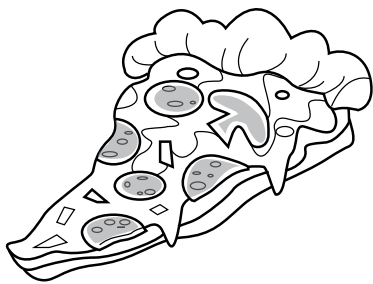
CASE STUDY: THREE STOCKS

YUM! BRANDS (YUM)

Yum! Brands owns such popular chains as Taco Bell, KFC and Pizza Hut. It currently sells for about \$113 a share.

Stock symbol: YUM

Today's share price: \$113

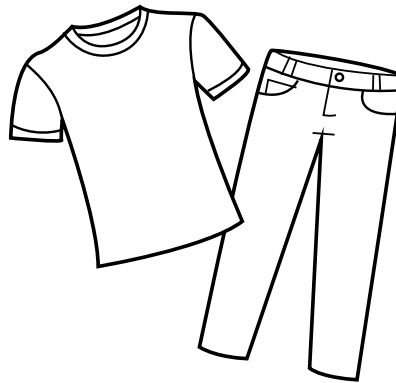


TARGET (TGT)

Target has 1,853 stores in the United States that sell everything from baby cribs to bananas. Shares are about \$215 each as of March 2022.

Stock symbol: TGT

Today's share price: \$215

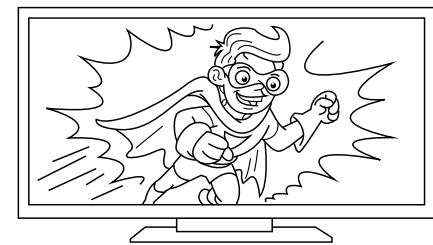


WALT DISNEY (DIS)

Walt Disney owns several business interests: animated films, theme parks and the sports network ESPN, among others. It sells for about \$141 a share.

Stock symbol: DIS

Today's share price: \$141



Source: www.nasdaq.com

www.nasdaq.com/symbol/tgt/analyst-research

www.nasdaq.com/symbol/dis/analyst-research

For educational purposes only. Current share prices may differ from what is shown.

Teacher Presentation Slides

Answer Key

UNDERSTANDING COMPOUND INTEREST WARM UP

PRINCIPAL: An amount of money originally invested, excluding any interest or dividends

INTEREST: Earnings from lending money

COMPOUNDING: Calculating interest on both principal and previously earned interest

You have placed \$2,000 (called the principal) into a savings account. Your bank offers a generous interest rate of 5%, compounded annually. Using the table below, determine how much money your \$2,000 would increase to in five years.

YEAR	BALANCE	INTEREST	TOTAL
1	\$2,000.00	\$100.00	\$2,100.00
2	\$2,100.00	\$105.00	\$2,205.00
3	\$2,205.00	\$110.25	\$2,315.25
4	\$2,315.25	\$115.76	\$2,431.01
5	\$2,431.01	\$121.55	\$2,552.56

COMPOUND INTEREST FORMULA

$$A = P\left(1 + \frac{r}{n}\right)^{nt}$$

P = principal amount
(the initial amount you owe or borrow)

r = annual rate or interest (as a decimal)

t = number of years the amount is
deposited or borrowed for

A = amount of money accumulated
after n years, including interest

n = number of times the interest
is compounded per year